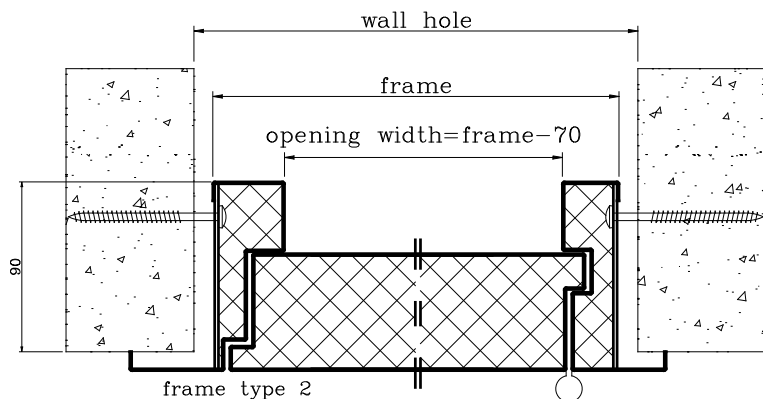
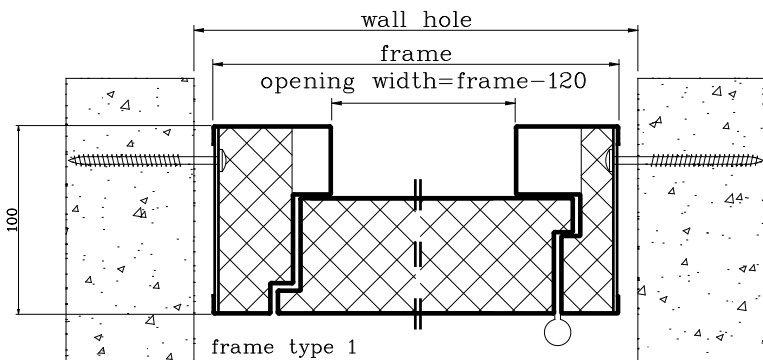
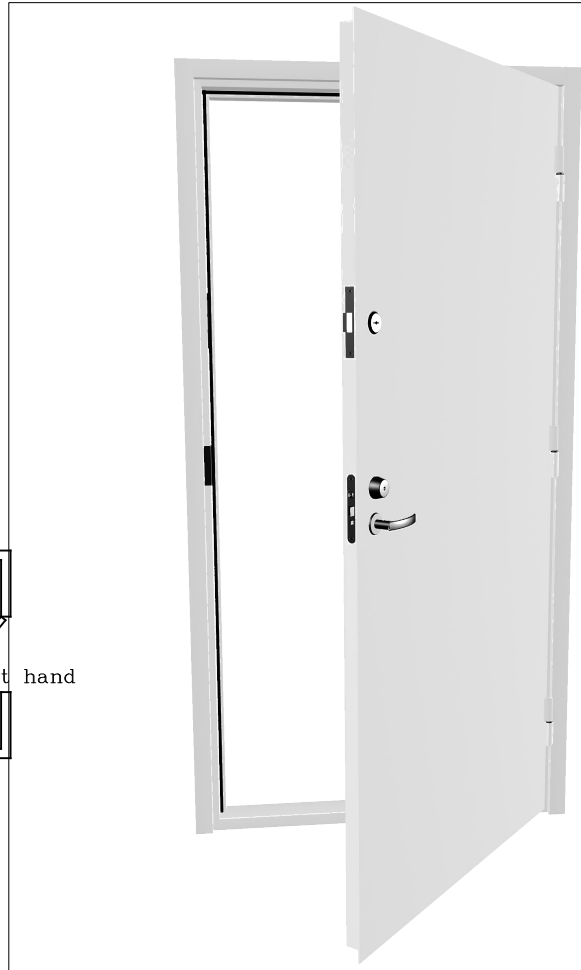
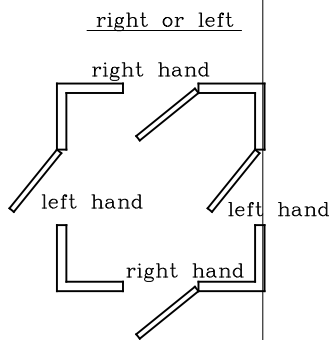
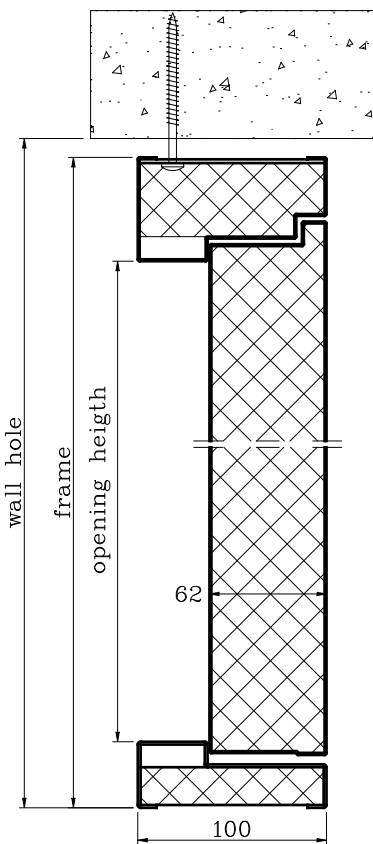


Rauduks OÜ	koostas:	A. Murde	tähis:	P07J09
Fire door TTU2 EI30	kinnitas:	A. Orumaa	lehti:	1
	kehtib alates:	01.06.2015	leht:	1



<b>Applications:</b>	
Internal and external doors	
<b>Features:</b>	
Max. width of the frame	1200 mm
Max. height of the frame	2400 mm
Steel sheet	- cold rolled - galvanized - stainless - laminated
Thickness	1,0 mm
Fire resistance	EN 13501-2 EI60
Threshold	1,5 mm stainless
Finish	Powder Coating
Air Vent	yes
Glass Panel	yes
Peephole	yes
Lock types	all common types

